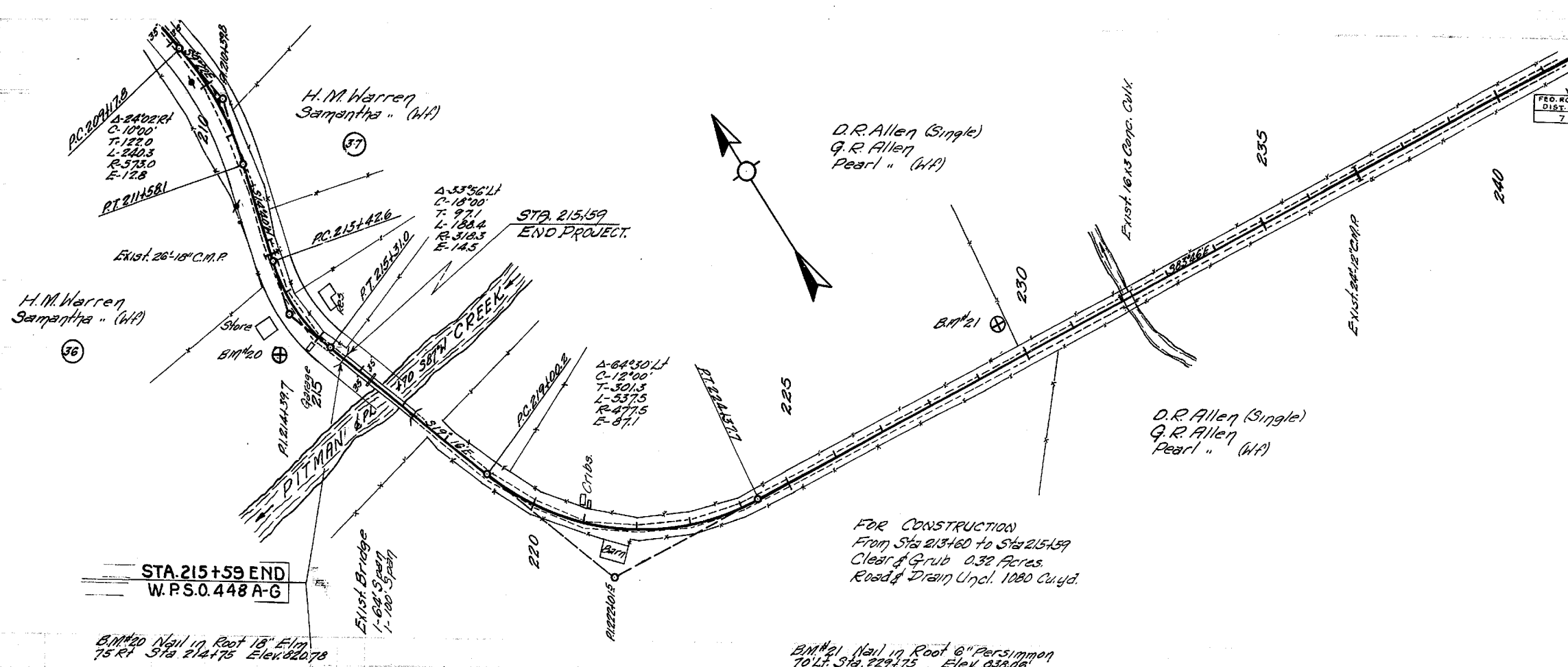


W.P.S.O. 448 A-G					
FED. ROAD DIST. NO.	STATE	FED. AID PROJ. NO.	FISCAL YEAR	SHEET NO.	TOTAL SHEETS
7	KY		1935	11	47

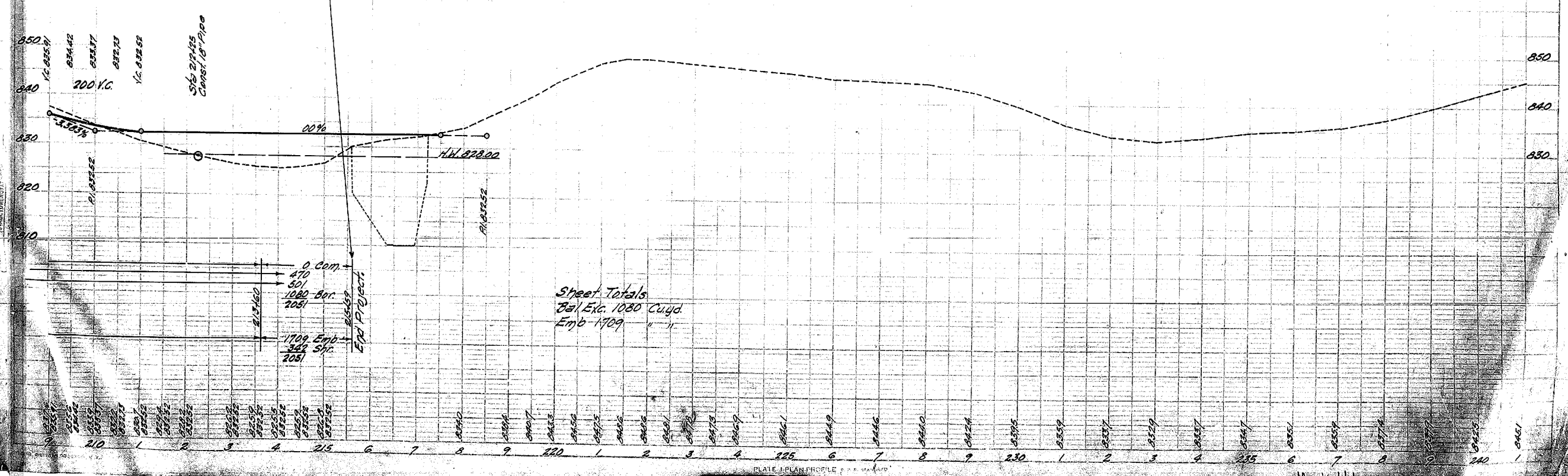


STA. 215+59 END
W.P.S.O. 448 A-G

B.M. #20 Nail in Root 18" Elm
75 Ft Sta 214+75 Elev. 820.78

B.M. #21 Nail in Root 6" Persimmon
70 Ft Sta 229+75 Elev. 838.06

FOR CONSTRUCTION
From Sta 213+60 to Sta 215+59
Clear & Grub 0.32 Acres.
Road & Drain Incl. 1080 Cu yd.



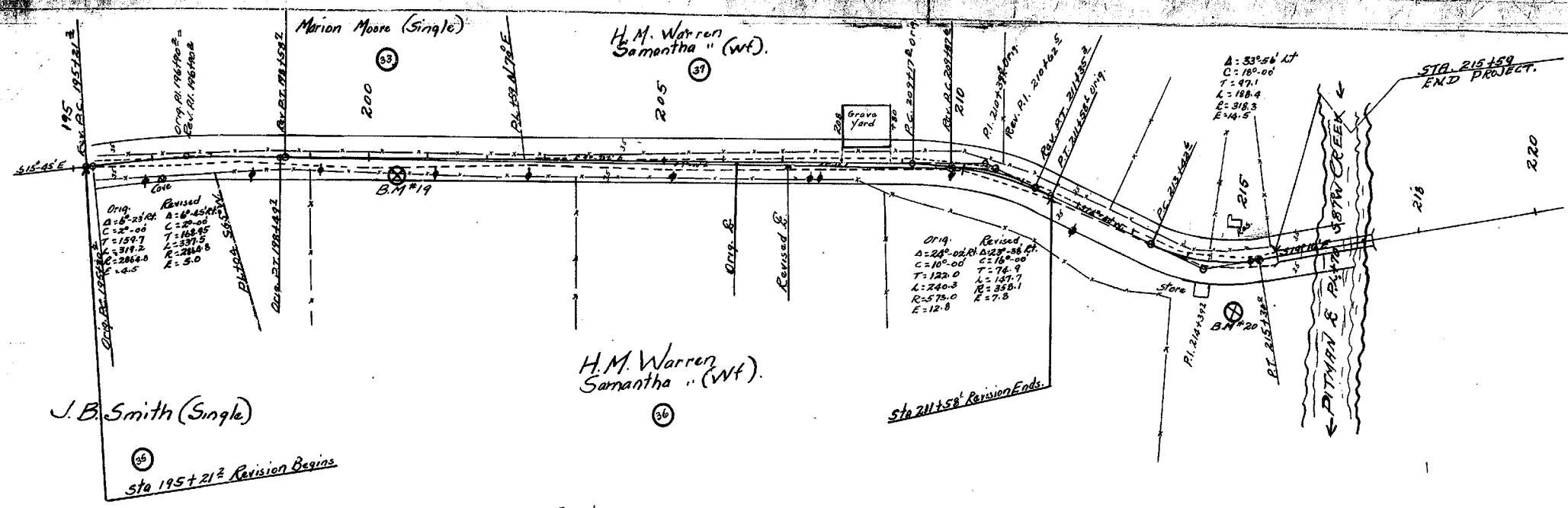
Sheet Totals
Bal. Exc. 1080 Cu yd.
Emb 1709 " "

Mock 1111

STATE	ROUTE	SECTION
KY	7	155

APPROVED

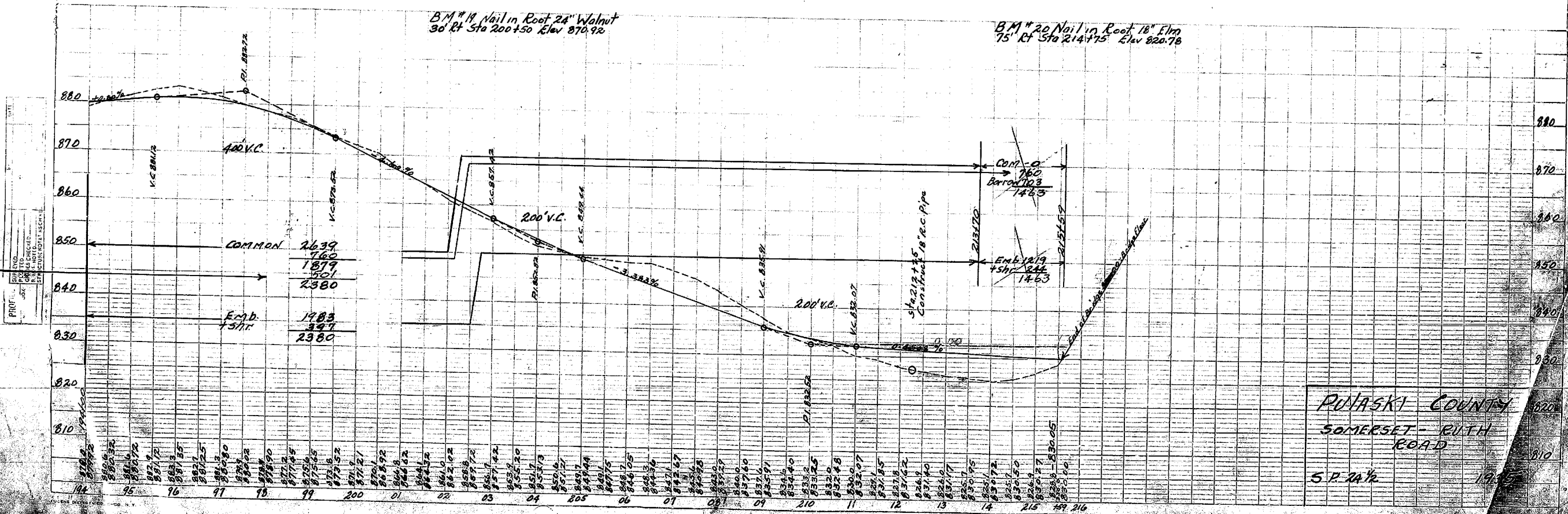
PLAN
 CURVES
 PLOTTED
 REVISIONS CHECKED
 NO. 1



CONSTRUCTION REVISION
 Sta. 195+21.2 to Sta. 215+59
 RECOMMENDED FOR APPROVAL 3/16 1936
G. P. Logan
 ENGINEER OF CONSTRUCTION

FOR CONSTRUCTION
 STA. 194+00 TO STA. 215+59
 Clearing & Grubbing 3.47 ACRES
 Roadway & Drain Exc. UNCL 2,639 C.Y.

APPROVED 3/28 1936
Ben Johnson by Willis
 CHAIRMAN STATE HIGHWAY COMMISSION



RUTASKI COUNTY
 SOMERSET - RUTH ROAD
 S.P. 24 1/2