

Sta. 15+22 Const. Ent. Lt.

Somerset - Ruth - Mt. Victory Road

PULASKI CO. D 5 448 (8)				
SOMERSET - RUTH - MT. VICTORY ROAD				
FED. R.D. NO.	STATE	FED. AID FISCAL YEAR	SHEET NO.	TOTAL SHEETS
7	KY 4448(8)	1958	13	33

ED WARREN PEARLIE (WF.)

JOE WARREN PEARL (WF.)

Sta. 21+00 Const. Ent. Lt. 28'-15" Ent. Pipe

Sta. 19+14 Const. Ent. Rt. 24'-15" Ent. Pipe

Sta. 22+31 Const. Ent. Rt. 28'-15" Ent. Pipe

Sta. 14+87 Const. Ent. Rt. 28'-15" Ent. Pipe

GAIL PING ROBERTA (WF.)

STA. 11+00 BEGIN
k.s. 100-115
S 448 (2)

FOR CONSTRUCTION
Sta 11+00 to Sta 39+59
Clearing & Grubbing 7.81 Ac
Roadway Excavation 16635 CuYd

Note: Detour to be maintained for traffic during construction.

(Remove) Existing Bridge:
Approach Span: 63.5x12'
Deck Type Const. Wood
Girders, & Floor Steel Floor
Beams and Iron Piers 16" C.C.
Main Span: 99.5x12' Steel
Truss Const. Wood Stringers
Steel Floor Beams, Wet Mas.
Abuts.

Note: Existing Bridge has no value for salvage but during removal if any parts of bridge are found to be satisfactory by Engineer they are to be stored and picked up by the Maintenance Dep.

BM #2 Nail in Root of 15" Cedar
52' Lt. Sta. 15+30 Elev. 1035.51

BM #3 Nail in Base 20" Cedar
150' Lt. Sta. 26+63 Elev. 1018.74

BM #4 U.S.C. & G. F. 136-1950 Bronze Plate in Conc. Post
122' Lt. Sta. 36+85 Elev. 992.78

SHEET TOTALS

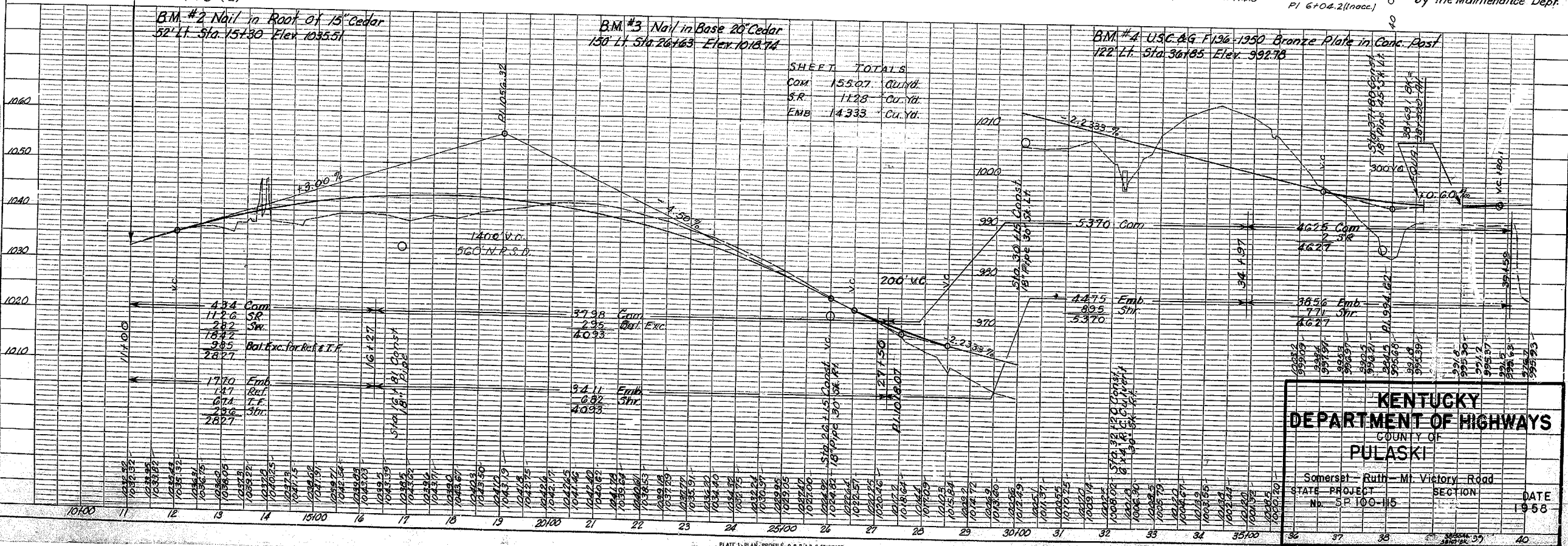
COM	155.07	Cu.Yd.
S.R.	1128	Cu.Yd.
EMB	14333	Cu.Yd.

PLAN

DATE	
BY	
CHECKED	
APPROVED	

PROFILE

DATE	
BY	
CHECKED	
APPROVED	



KENTUCKY DEPARTMENT OF HIGHWAYS
COUNTY OF PULASKI

Somerset - Ruth - Mt. Victory Road
STATE PROJECT No. SP 100-115 SECTION DATE 1958

RS 100-115-8